

MapeWrap EQ System

THE INNOVATIVE PASSIVE PROTECTION SYSTEM FOR BUILDINGS IN THE EVENT OF SEISMIC ACTIVITY



**MapeWrap EQ System...
...the safe answer for earthquakes**





Application of **MapeWrap EQ System** on a ceiling.
Private house. Finale Emilia, Modena, Italy.



Final skim coat with **Planitop 200**.
Private house. Finale Emilia, Modena, Italy.



Application of **MapeWrap EQ System** on a wall.
Pio. Middle School. Carpi, Modena, Italy.



Application of **MapeWrap EQ System** on a wall.
Pio. Middle School. Carpi, Modena, Italy.

MapeWrap EQ System

To reduce the level of danger during seismic activity the **MapeWrap EQ System**, has been developed, an innovative, anti-seismic protection system in the form of “seismic wallpaper” that increases the time available to evacuate buildings during earthquakes.



Application of **MapeWrap EQ System**.
A. Pio Middle School. Carpi, Modena.

The “vulnerability” of strategically important buildings, such as schools, hospitals, hotels, etc., is influenced not only by their structural elements, but also by non structural elements which account for more than 40% of the overall functionality of a building.

If the flow of people trying to evacuate a building is interrupted by fallen partition walls or false ceilings, those people present in the building would be in serious danger.

MapeWrap EQ System comprises **MapeWrap EQ Net** bi-directional **MapeWrap EQ Adhesive** one-component, polyurethane-based adhesive applied perfectly to rendered surfaces.

MapeWrap EQ Adhesive



Technical Data	
Product Identity	
Consistency	gel
Colour	milky white
Final hardening time	24 hours
EMICODE	EC1 Plus - very low emission
Consumption	0.5 - 0.6 kg/m ²
Packaging	6 kg drums

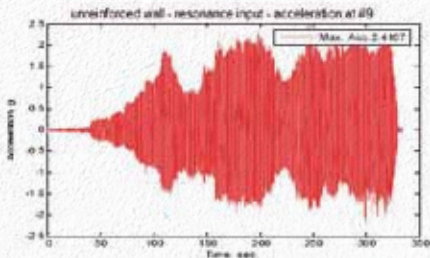
MapeWrap EQ System developed by Mapei in collaboration with KIT (Karlsruhe Institute of Technology) and Bayer



EXPERIMENTAL TESTING ON



Frequencies measured on the panel reinforced with **MapeWrap EQ System** reinforcement (as-built), a clear sign that the opening of the cracks maximum acceleration and deformation due to the bending moment b **EQ System**.



, primed, glass fibre reinforcing fabric used in combination with resin in water dispersion. The strengthening system adheres

MapeWrap EQ Net

Technical Data

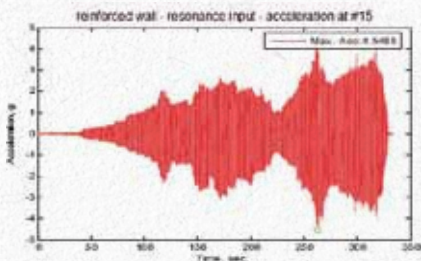
Product Identity

Type of fibre	E (primed) type glass fibres
Weight	286 g/m ²
Equivalent thickness of dry fabric	57.00 (mm ² /m)
Tensile strength	> 1,600 N/mm ²
Tensile modulus of elasticity	42 GPa
Width	100 cm
Elongation at failure	4%
Packaging	50 m rolls

FULL-SCALE BUFFER PANELS



system were considerably higher compared with the panel without MapeWrap. The failure occurred later. There was a difference of more than 80% in the peak acceleration between the “as-built” panel and the panel protected by MapeWrap





● **Technical documentation**

From the technical area menu you can view the technical documentation divided per product lines and type of document.

HEAD OFFICE
MAPEI SpA
Via Cafiero, 22 - 20158 Milan
Tel. +39-02-37673.1
Fax +39-02-37673.214
Internet: www.mapei.com
E-mail: mapei@mapei.it



/mapeispa

